



SIDAPHARM[®]
Ophthalmic & Medical Disposable Products

SLens_{ida}

One-Piece Acrylic
Foldable Intraocular Lens

Cartridge Loading Instructions

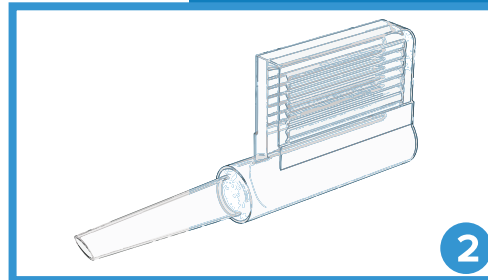
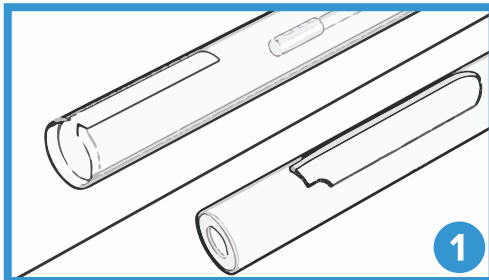
SLens

One-Piece Acrylic Foldable Intraocular Lenses

Cartridge Loading Instructions

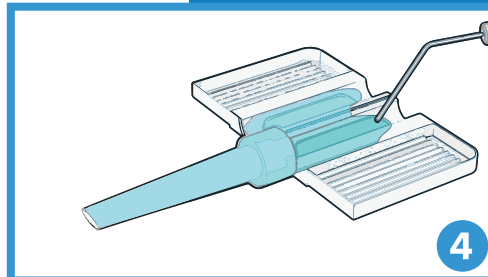
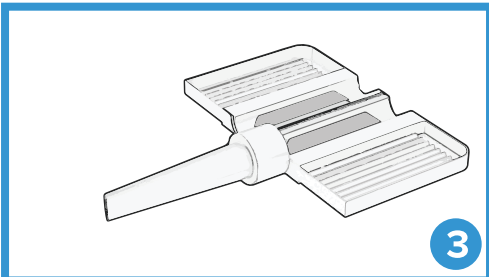


Front Load/Back Load System



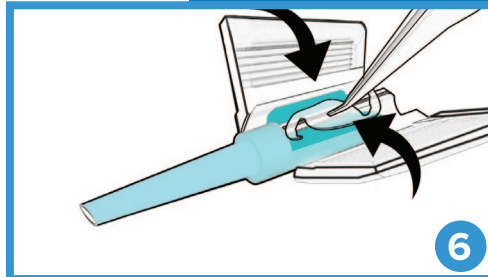
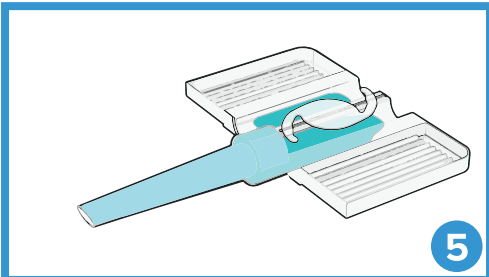
Remove the cartridge from the sterile packaging

Open wide the flaps of the cartridge in horizontal position



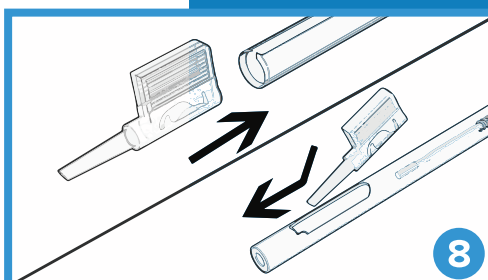
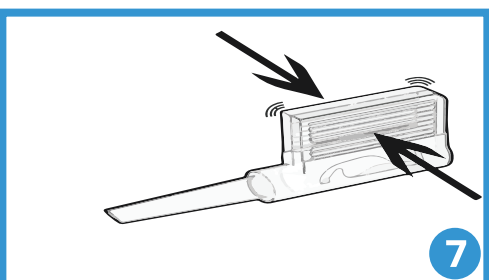
Apply adequate amount of viscoelastic inside the tip and the canal of the cartridge

Position the lens inside the cartridge horizontally ensuring it stays inside the cartridge canal



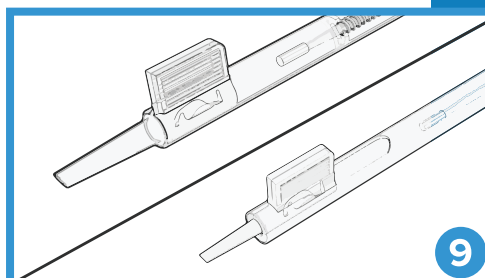
With the aid of a pair of forceps press gently the lens and carefully close the flaps of the cartridge

Press firmly the two flaps until you hear a "click" and the cartridge is securely closed



Insert the cartridge in the injector through the slot and ensure it clicks securely into position

The cartridge should be positioned fully inside the injector slot parallel to the tip



SIDAPHARM

21, Stageiriti & 24, Em. Fili Str.
Thessaloniki, GR- 54352, Greece, European Union
T +30 2310:906660 info@sidapharm.gr
F: +30 2310 989846 www.sidapharm.gr

